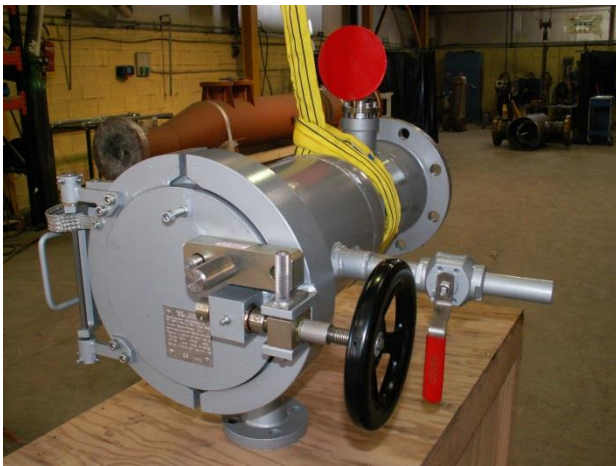




PIG TRAPS

PGME designs and produces pig traps equipped with its own quick opening closures. Pig traps are used for the insertion and recovery of pigs or scrapers that clean or control pipelines.



Several options are available :

- Valve
- Pig manipulator
- Jib crane
- Pig signaler
- Support
- Skid-mounted



SPECIFICATIONS	
Dimension range	4'' – 64'' (DN100 - DN1600)
Pressure rating	Class 150 – Class 2500 (PN20 – PN420)
Product design code	CODAP – ASME – CODETI
Material	A106 Gr. B – A333 Gr. 6 - API 5L
Surface coating	Epoxy paint
Connection	Butt-welded – Flange-mounted (RF/RTJ)
Options	Butt-welded quick opening closure Flange-mounted (RF, RTJ) quick opening closure Pig signaler Pig manipulator Jib crane





PIG SIGNALER



PGME's pig signalers are bidirectional. They can either be used at scraper entrance or exit. Their red visual head can easily be located on a pipeline.

When the scraper passes under the pig signaler, it lifts a lever to release the red visual head that was held by a hook.

Our pig signaler is very easy to prime. One just has to pull down the red visual head in the hook to replace the lever in vertical position.

PGME's complete range of pig signaler is displayed on a specific sheet. It shows our different kind of head, body and base.

PIG MANIPULATOR



PGME's Pig manipulators are designed to manipulate any kind of pig.

They are made of an extracting stem to bring the pig out of the pipeline and place it on a mobile cradle where it will be cleaned and then safely transported.

TRANSPORTATION

PGME can deliver its scraper traps all over the world.

